



# **How to install Parslinux 1.0 on hard disc ?**

**By : Navid Hasanzadeh**

2008 - 2009  
[www.Pars-linux.com](http://www.Pars-linux.com)

# Parslinux GNU/Linux

## What's Parslinux GNU/Linux?

Parslinux GNU/Linux is a live and Installation CD.

It's been derived from slax with slackware as it's basic and KDE on the default desktop. Parslinux GNU/Linux supports Persian language amongst many others. When you install Parslinux GNU/Linux it works on your computer operating system.

## How to install Parslinux ?

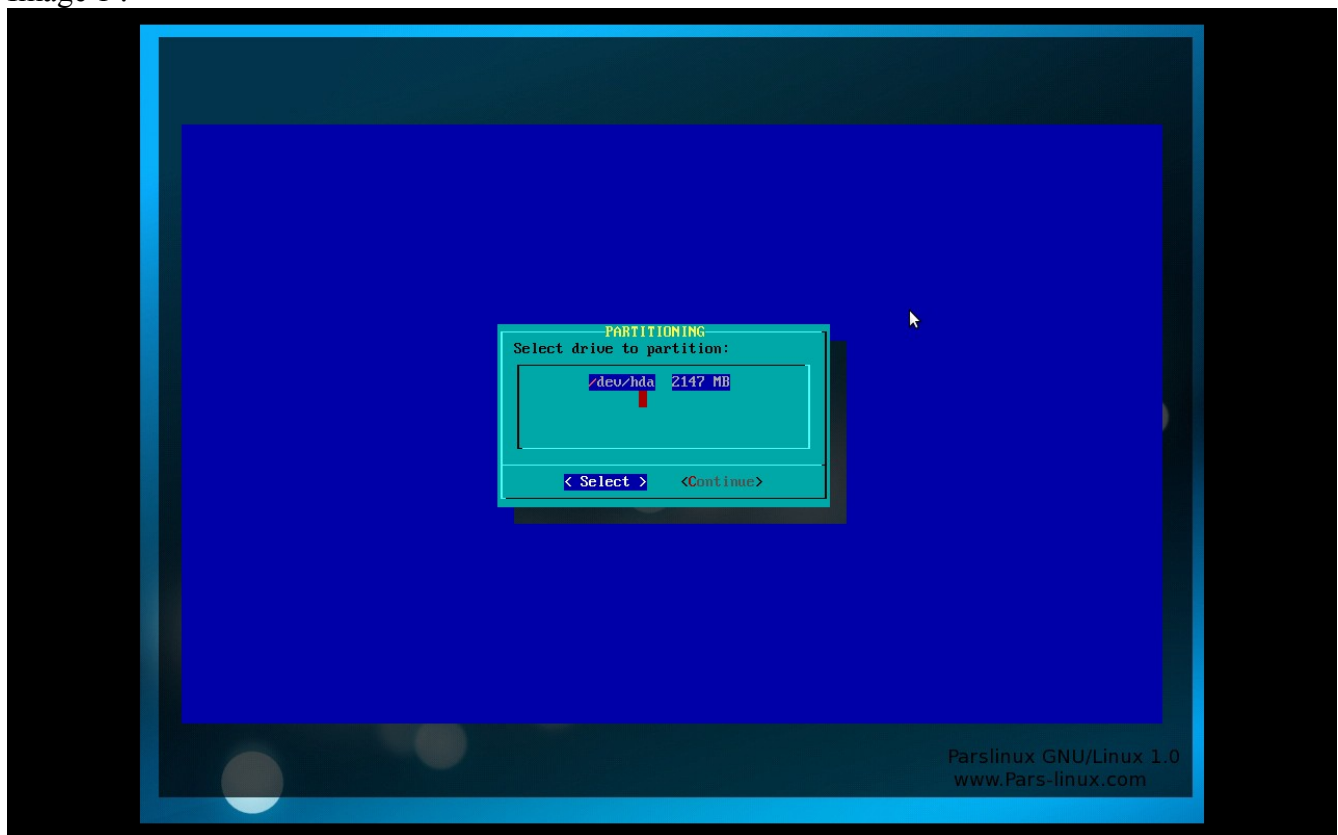
1- Insert Parslinux 1.0 DVD and select RUN Parslinux installer from LILO boot manager and wait for 3 – 4 minutes for system to boot.

2. After this you should see a dialog about Parslinux installer . If you don't see any dialog , press F2.

3- Click or Enter OK button

4- Click again

Image 1 :



5- Then you should see the above image , You have two options :

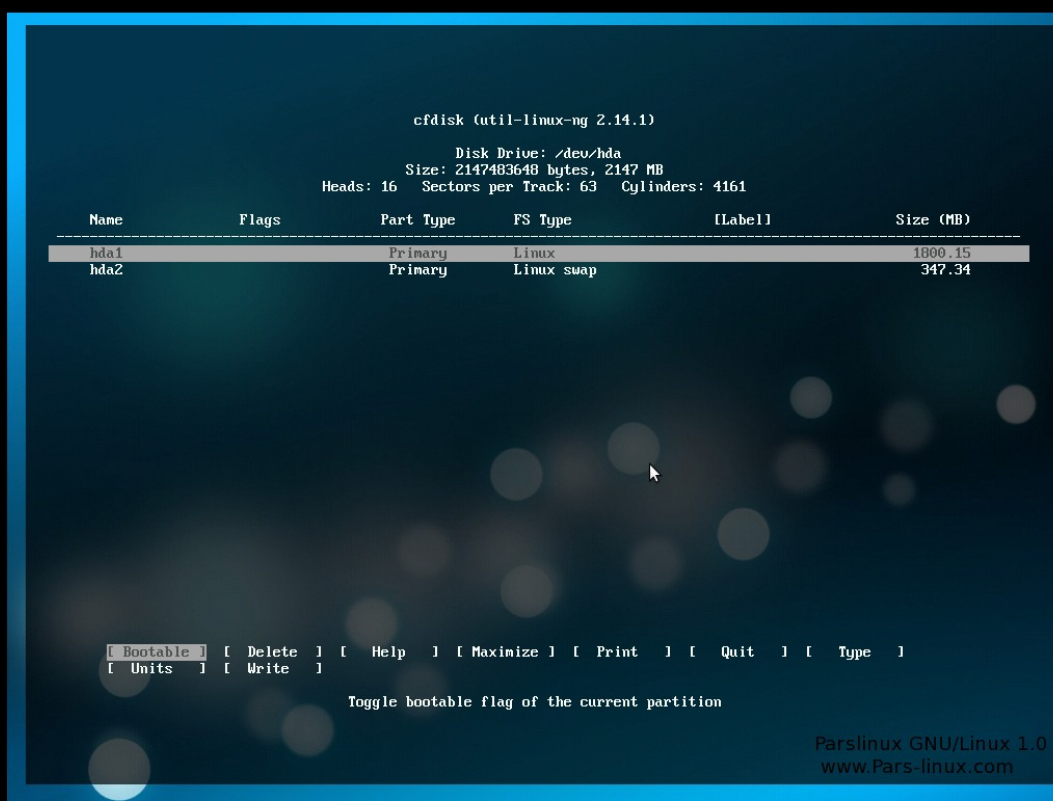
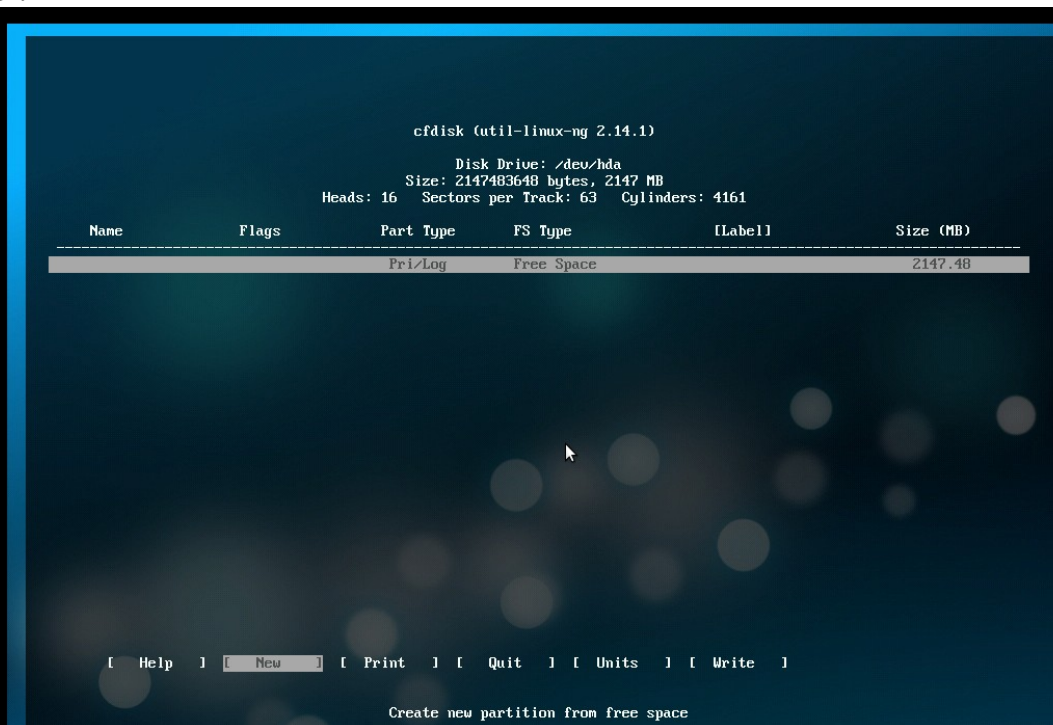
Select : Use this option if you have not made any partition for Linux

Continue : Use this option if you have done so

You need two partitions : 1- reiserfs (6 GB minimum ) 2- Linux swap (256 MG minimum)

These images show : Make Partitions with cfdisk (if your option is Select) :

Image 2 ,3 :

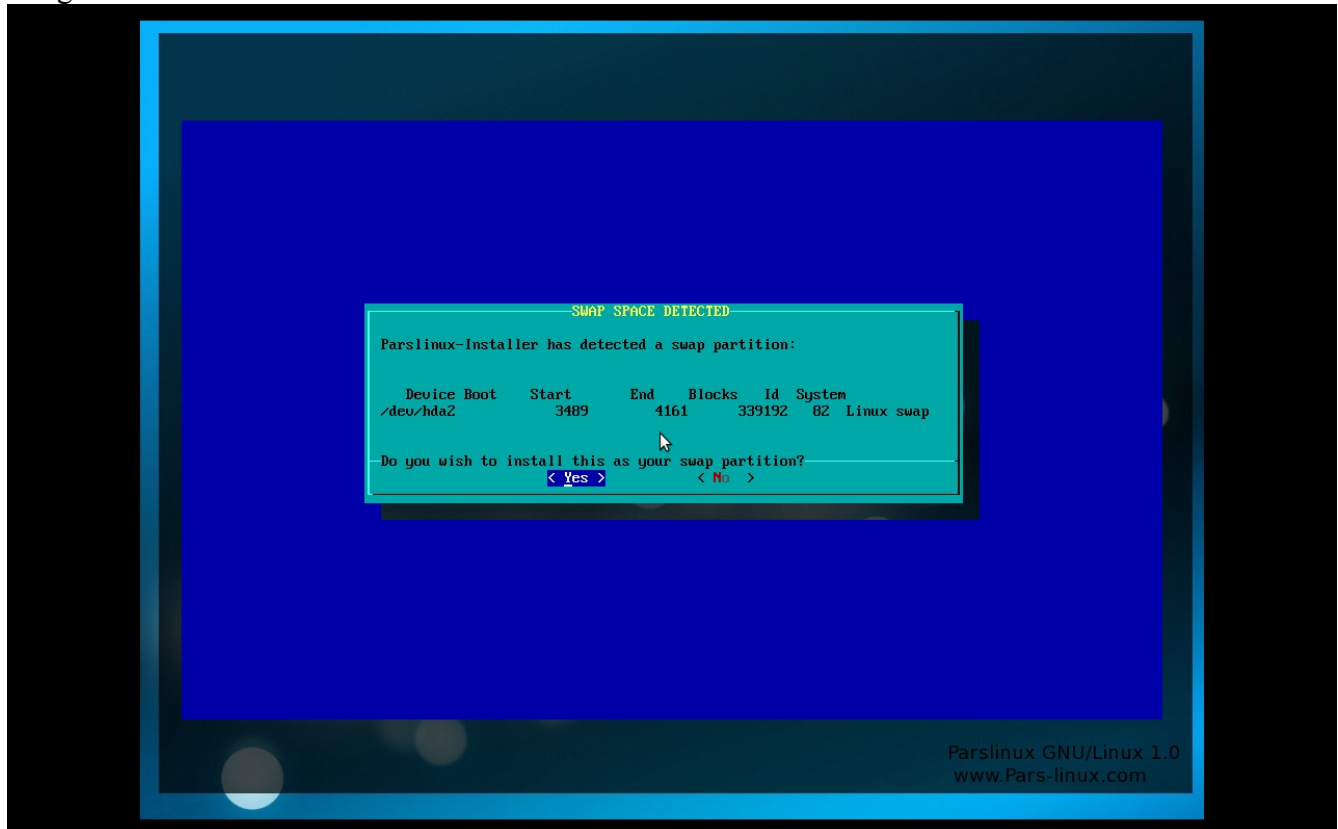


After you make partitions , click or select Write and then select Quit

Now, you should have image 1 again , so you can select Continue.

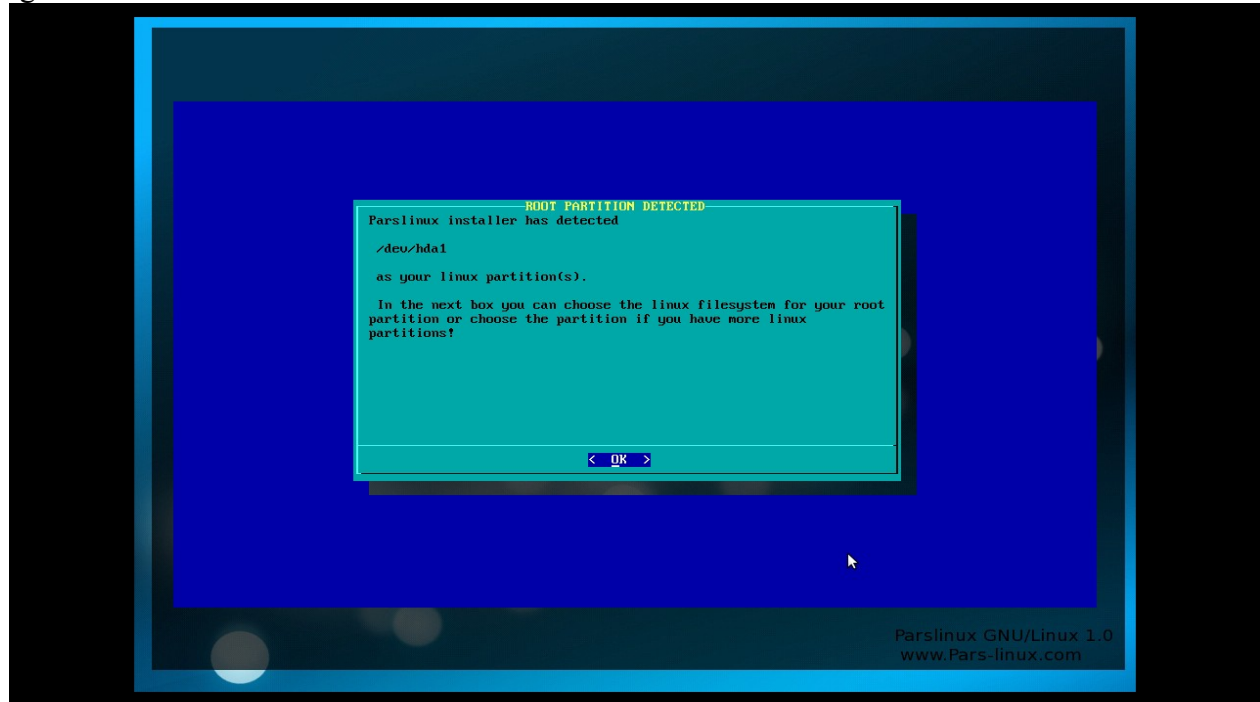
6-If you see any dialog with this title (SWAP SPACE DETECTED) select YES

Image 4 :



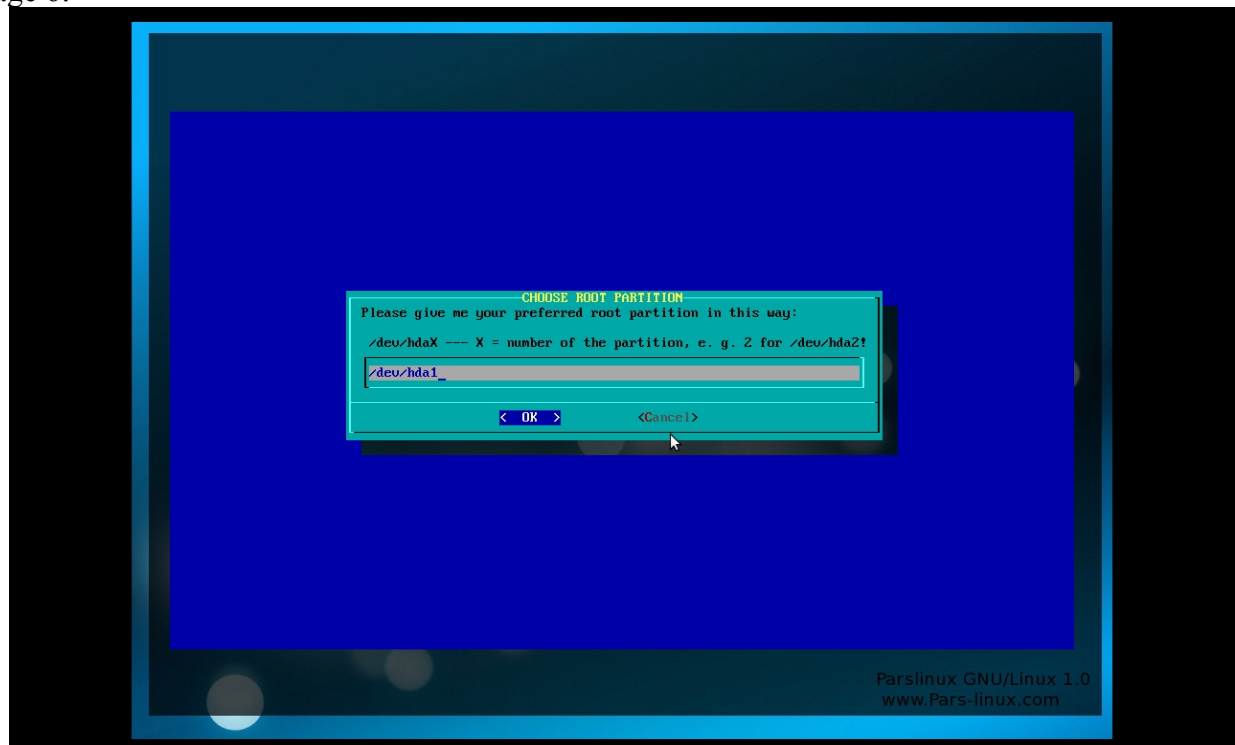
Then you have this dialog :

Image 5:



Look at the second line : “/dev/hda1” remember this and select OK :

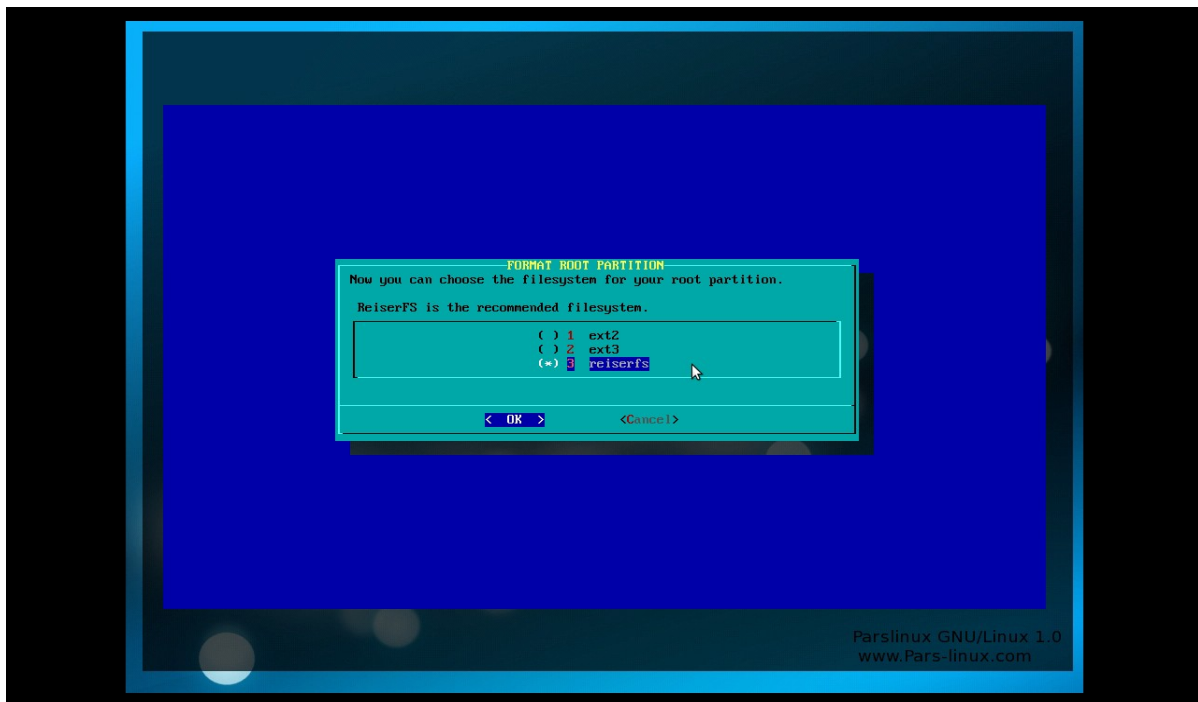
Image 6:



Write the second line in previous dialog ,for example : /dev/hda1

7-Select type of root partitions

Image 7:

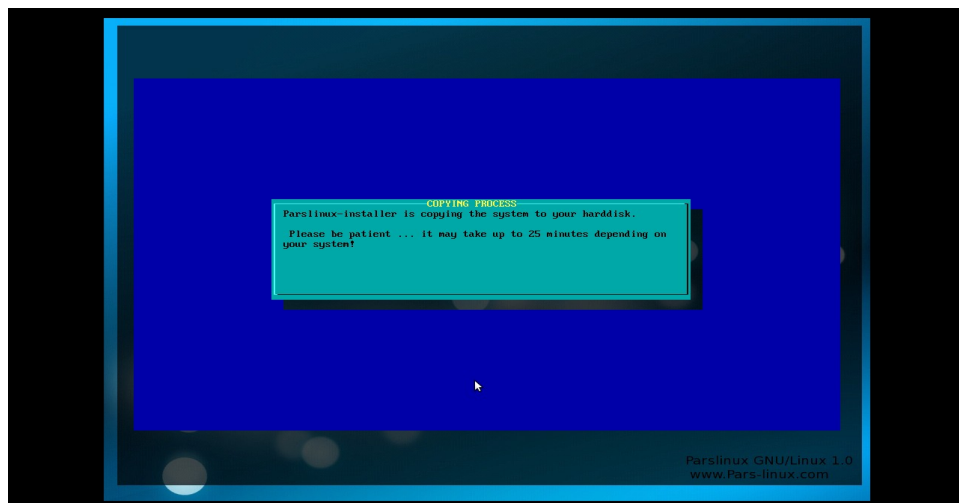


reiserfs is recommended.

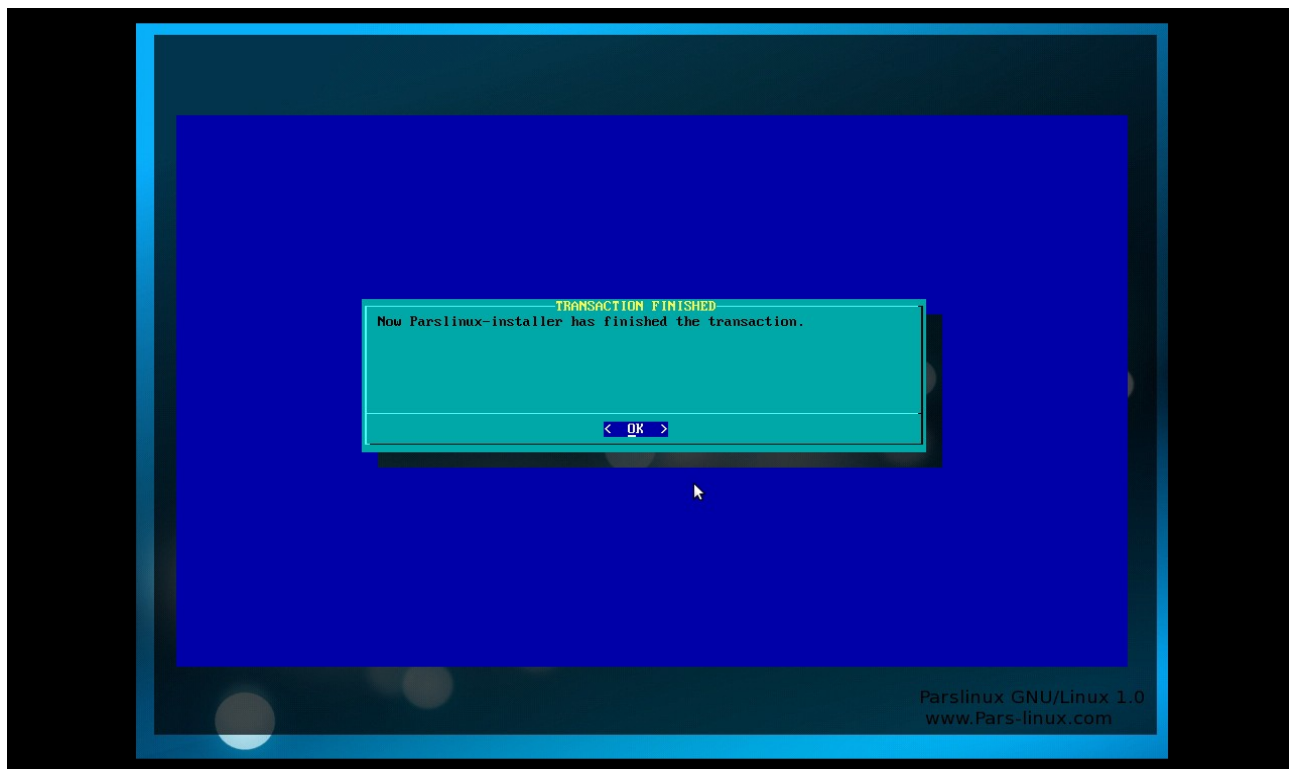
Select OK.

8-Wait for 25-30 minutes while Parslinux files are being copied and installed to your computer hard disc

Image 8:



Next you should have this,if installation is completed :  
Image 9 :



Select OK to choose items you like have in boot manager :

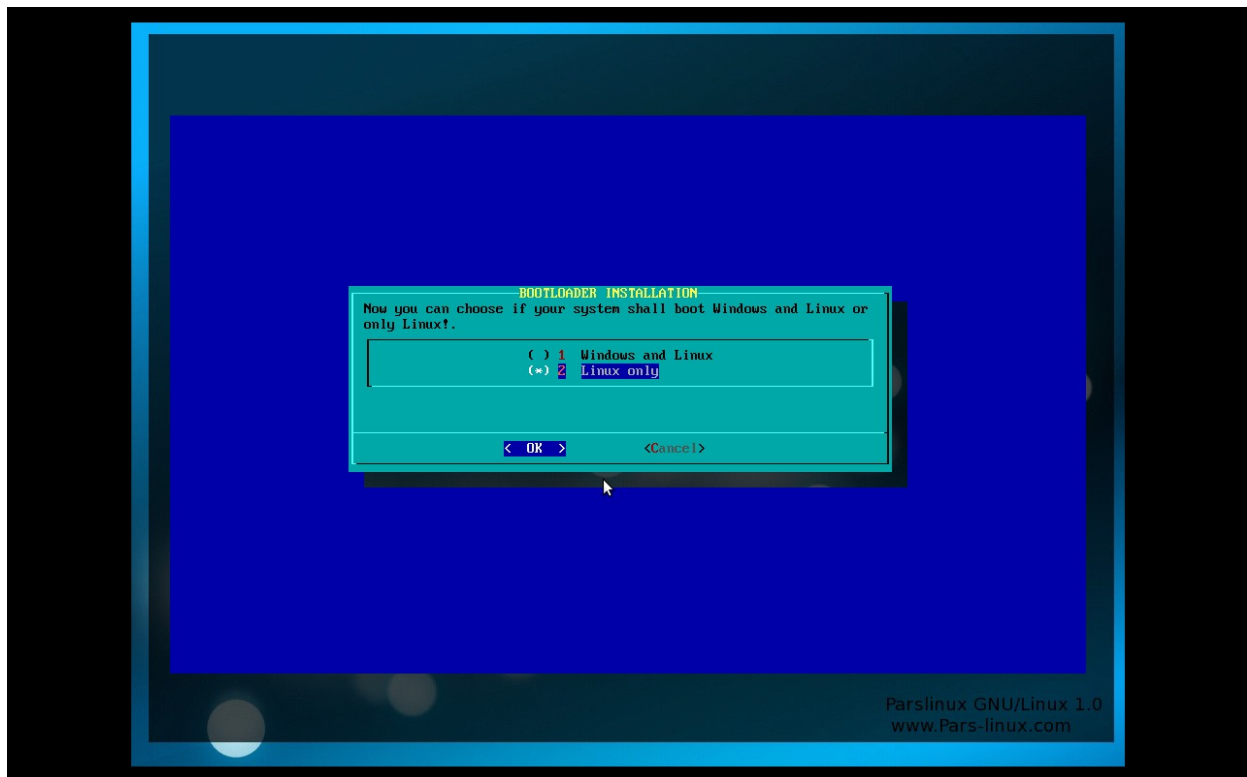


Image 10

If you have Microsoft Windows (95,98,ME,2000,XP,2003,Vista) select option one (Windows and Linux)

Otherwise choose option 2 and select OK



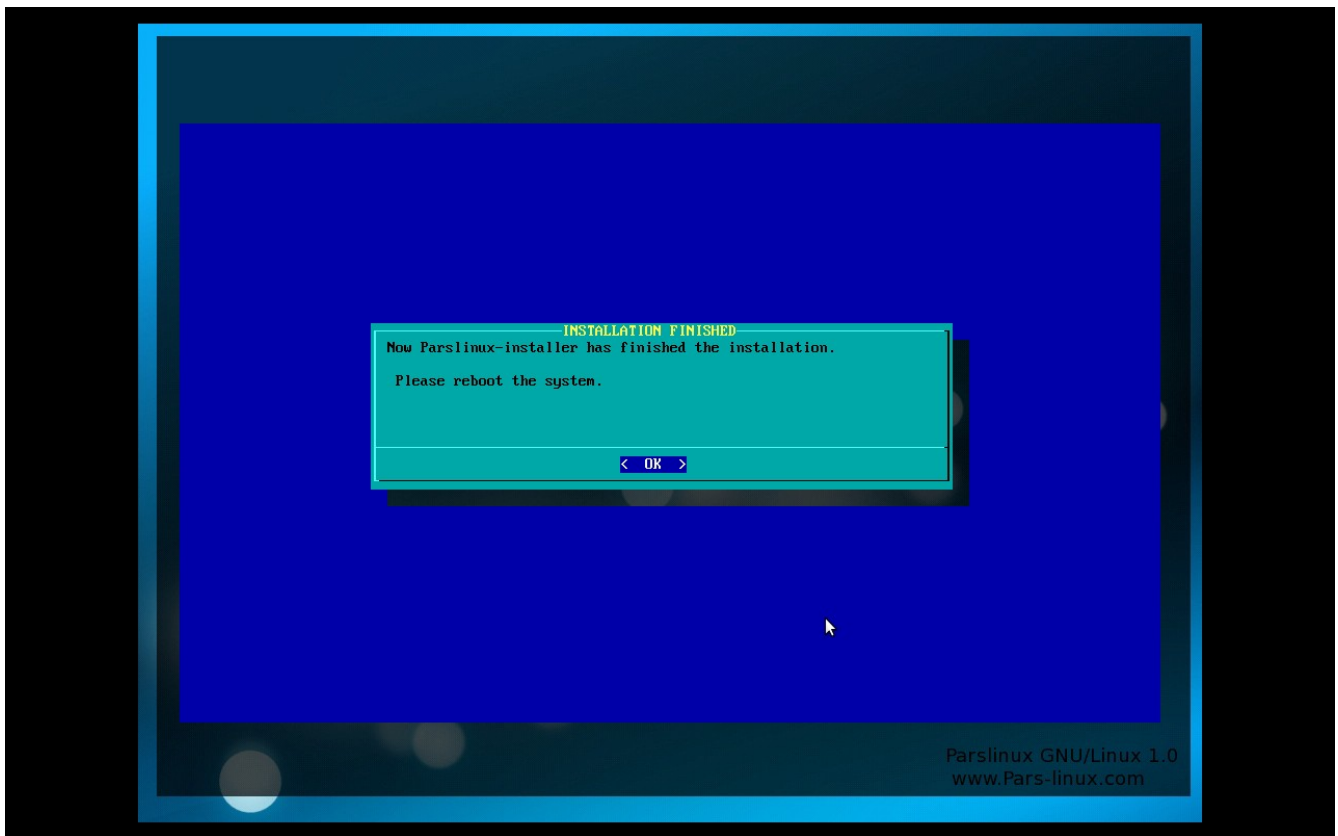


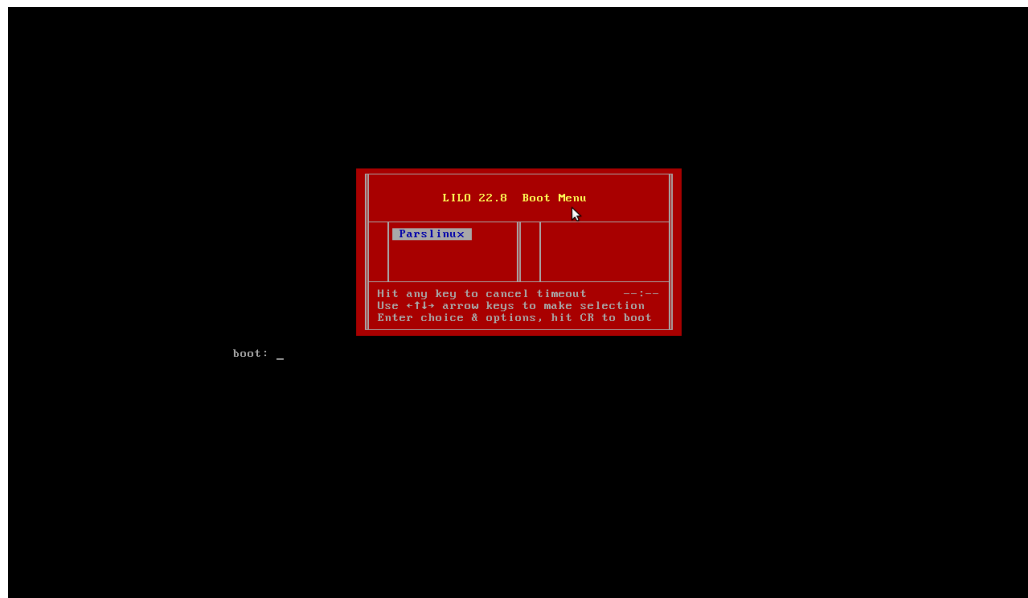
Image 11

Congratulations!


You have Parslinux GNU/Linux 1.0 on your computer now.

Now , you can reboot your computer (Ctrl+Alt+Del)and select Parslinux to boot :

Image 12 :



Wait for 1-2 minute for system to boot :  
Image 13 :



```
md: raid0 personality registered for level 0
md: raid1 personality registered for level 1
md: raid10 personality registered for level 10
raid6: int32x1    437 MB/s
raid6: int32x2    508 MB/s
raid6: int32x4    311 MB/s
raid6: int32x8    292 MB/s
raid6: mmx1       559 MB/s
raid6: mmx2       642 MB/s
raid6: sse1x1     403 MB/s
raid6: sse1x2     543 MB/s
raid6: sse2x1     601 MB/s
raid6: sse2x2     1060 MB/s
raid6: using algorithm sse2x2 (1060 MB/s)
md: raid6 personality registered for level 6
md: raid5 personality registered for level 5
md: raid4 personality registered for level 4
md: multipath personality registered for level -4
input: AT Translated Set 2 keyboard as /class/input/input2
device-mapper: uevent: version 1.0.3
device-mapper: ioctl: 4.14.0-ioctl (2008-04-23) initialised: dm-devel@redhat.com
usbcore: registered new interface driver hiddev
usbhid: registered new interface driver usbhid
usbhid: v2.6:USB HID core driver
TCP cubic registered
Initializing XFRM netlink socket
NET: Registered protocol family 17
RPC: Registered udp transport module.
RPC: Registered tcp transport module.
IO APIC resources could be not be allocated.
Using IPI No-Shortcut mode
md: Waiting for all devices to be available before autodetect
md: If you don't use raid, use raid=noautodetect
md: Autodetecting RAID arrays.
md: Scanned 0 and added 0 devices.
md: autorun ...
md: ... autorun DONE.
ReiserFS: hda1: found reiserfs format "3.6" with standard journal
ReiserFS: hda1: using ordered data mode
ReiserFS: hda1: journal params: device hda1, size 8192, journal first block 18, max trans len 1024, max batch 900, max commit age 30, max trans age 30
ReiserFS: hda1: checking transaction log (hda1)
```

Then you have this image :

```
Welcome to Parslinux 1.0 by Navid Hasanzadeh

Commands:
Xconf = Install Graphic
KDM = Run KDE - Parslinux
Passwd = Change root Password
Reboot = Reboot system
Poweroff = Shutdown system
-----
Username = root
Password = toor
2008 -2009
www.Pars-linux.com
-----parslinux login: STOPPING server from pid file /var/run/mysql/mysql.pid 090316

20:50:48 mysql ended

root
Password: ****
root@parslinux:~# kdm
```

Image 14

Now , You should enter computer's user name and password to login as below :

User name : root

Password : toor

and then write `kdm` or `startx` to run Parslinux with KDE 4.2 ; If you want to install graphic card before running Parslinux , write `xconf;kdm`



Image 15

**ENJOY!**

If you have any problem send email to [Parslinuxadmin@gmail.com](mailto:Parslinuxadmin@gmail.com)